



Providing Environmental Solutions



Ecological Surveys and Strategic Studies

Ecology, Land and People



Effective ecological surveys and studies provide a robust basis for decision making in the management and improvement of the environment. They can also contribute to the achievement of statutory environmental targets (such as those set under the Water Framework Directive).

Our highly skilled in-house team deliver a wide range of ecological, physical, and water quality based studies and assessments for habitat improvements, monitoring projects, management strategies, planning and development.

We have specialist experience in wetland and aquatic ecology and much of our work is conducted in designated or protected areas. We are framework advisors to Natural England on wetlands, and our work contributes directly to the management and conservation of nationally and internationally important habitats.

“We really value working with your brilliant team”

*Andrea Kelly, Head of Conservation,
Broads Authority.*



www.ohes.co.uk

Ecological Surveys and Strategic Studies



We have an outstanding portfolio of work in ecological survey and strategic studies focusing on wetland, riverine and terrestrial environments. Our client base includes RSPB, Natural England, Broads Authority, Environment Agency, The National Trust, Water Companies, Wildlife Trusts, Local Authorities, Network Rail and many others.

Our services include:

- * Ecological Survey including:
 - Habitat Assessment (Phase I)
 - River Habitat/Corridor Survey (RHS/RCS)
 - Vegetation Survey (NVC)
 - Protected Species Survey
 - Aquatic Macrophyte Survey
 - Fisheries and Aquatic Ecology Survey
 - Site Condition Assessment
 - Topographical Survey and Interpretation
 - Soils Survey
 - Landscape Character Assessment
- * GIS Habitat Modelling and CAD Design
- * Ecological Impact Assessment (EclA)
- * Ecological Monitoring and Risk Assessment (ERA)
- * Environmental Statements (ES)
- * Ecological Resource and Mitigation Planning
- * Water Quality and Nutrient Management
- * Hydrological Assessment for Management Planning
- * Water Level Management Plans
- * Site and Habitat Management Plans
- * River Management Plans
- * Green Infrastructure Planning
- * Access and Interpretation

Please contact us if we can be of any further help. All the services we provide follow recommended Codes of Practice and national guidance.



Case Study: Broads Fen Survey, Norfolk Broads

OHES have been engaged in a long term survey of plant communities in the Norfolk Broads, undertaken on behalf of the Broads Authority. Following a successful pilot study carried out in 2005, we were commissioned to undertake an extensive survey of the reedbeds, reed fens and wet fen meadows within the Broads Authority's executive boundary.

The NVC survey collected over 7000 sample plots over three consecutive years and OHES has also conducted the analysis of the data set.

The findings of this study will form the basis for decision making in several aspects of the Authority's management programme for the Norfolk Broads.

OHES has also conducted peat coring studies, fen creation projects, a reed pelleting study, and a manual for wetland enhancement for the Broads Authority.



1 The Courtyard, Denmark Street, Wokingham, Berkshire, RG40 2AZ
T : 0870 240 3329 F : 0118 977 2147 E : info@ohes.co.uk
www.ohes.co.uk

Contact 0870 240 3329

www.ohes.co.uk





Protected Species

Working with Business, Protecting Wildlife



A number of rare British species, and their habitats are protected by both national and international legislation from harm and/or disturbance. These species frequently inhabit development sites, therefore appropriate surveys and mitigation are required to prevent a breach of legislation and to meet planning requirements.

Our in-house team of licensed protected species ecologists bring a creative, flexible and pragmatic approach to our work, with a strong emphasis on effective communication. We provide protected species surveys for clients such as developers, architects, Local Authorities, Government organisations, and landowners.

Commissioning appropriate ecological surveys at an early stage in project development can save time and money.

“It is an exciting challenge to conserve a rare species and enhance its habitat whilst ensuring the efficient delivery of development projects”

Protected Species



We offer the following protected species surveys:

- * Bats
 - Initial Survey
 - Activity Survey
 - Wind Turbine Bat Surveys
- * Great Crested Newts
 - Habitat Suitability Index
 - Presence/Population Survey
- * Dormouse
 - Nut Search
 - Nest Search/Survey
- * Badgers
 - Activity Survey
- * Reptiles
 - Habitat Assessment
 - Presence/Population Survey
- * Otter & Water Vole
- * Birds
- * White-Clawed Crayfish
- * Code for Sustainable Homes
- * Natural England European Protected Species (EPS) Mitigation Licence
- * Phase I Habitat Survey

Please contact us if we can be of any further help. All the services we provide follow recommended Codes of Practice and national guidance.

Bat Conservation Trust 



Case Study: Suffolk Barns

An architect commissioned an initial biodiversity survey on a complex of barns in Suffolk that were proposed for conversion into residential dwellings.

The initial survey considered a range of protected species such as bats, barn owls, great crested newts, water voles and reptiles. The results of the initial survey showed signs of recent bat activity.

Subsequently, before planning permission could be granted, a bat activity survey was undertaken to determine how bats were using the barns and develop an appropriate mitigation strategy. It was possible to phase the building works so that some development could start immediately in areas without bat roosts.

A new bat attic was created on site to house the bats so that this rare species was protected and the buildings could be converted rather than falling into disrepair.



1 The Courtyard, Denmark Street, Wokingham, Berkshire, RG40 2AZ
T: 0870 240 3329 F: 0118 977 2147 E: info@ohes.co.uk
www.ohes.co.uk

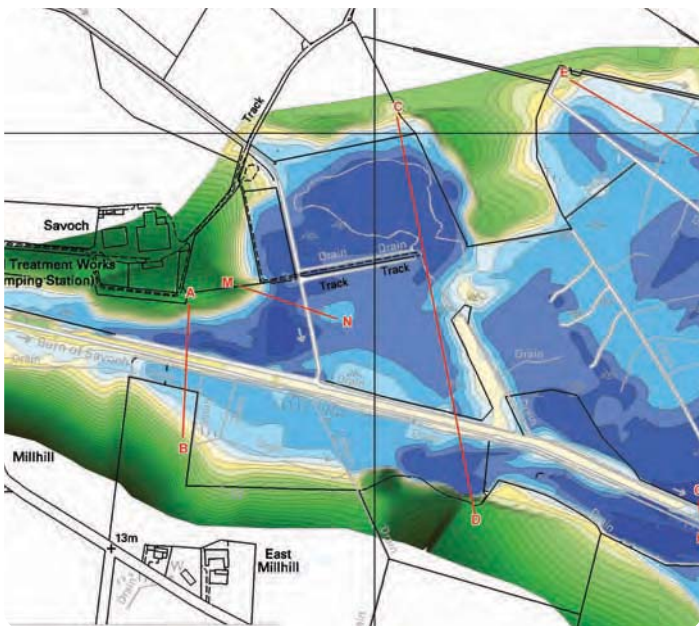
Contact 0870 240 3329

www.ohes.co.uk 



Habitat Restoration and Design

Better Biodiversity by Design



Habitat restoration is a fundamental step in achieving improved biodiversity, which requires knowledge and understanding of the interactions of wildlife and their environments.

We have an extensive track record in delivering high quality habitat restoration projects in a range of aquatic and terrestrial environments for the benefit of wildlife and people.

We are framework advisors to Natural England on issues affecting nationally and internationally important wetlands, and we are working on a broad portfolio of projects for clients such as RSPB, Environment Agency, Local Authorities and the Broads Authority.

OHES have certainly given us a pond that will not only be one of the best urban coarse fisheries in London, but also a fantastic place for people and wildlife to use and enjoy.

We certainly look forward to working with OHES again on many other exciting projects”

Dr Iain Boulton, Parks Project Officer,
London Borough of Lambeth

Habitat Restoration and Design



We can provide ecological, topographical, hydrological and soil surveys to inform feasibility, conceptual and detailed designs based on our extensive knowledge of wetland and terrestrial habitats, to provide practical and effective solutions to habitat creation, restoration and management projects. Our team can also offer project management services.

- * Topographical Survey and Interpretation
- * Soils Survey
- * Ecological Survey including:
 - Habitat Assessment (Phase I)
 - River Habitat Survey
 - Vegetation Survey (NVC)
 - Protected Species Survey
 - Aquatic Macrophyte Survey
 - Site Condition Assessment
- * Hydrological Studies
- * Water Quality and Nutrient Management
- * River Management and Restoration
- * Lake and Pond Restoration
- * Water Level Management
- * GIS and Habitat Modelling
- * CAD design
- * Access and Interpretation

Please contact us if we can be of any further help. All the services we provide follow recommended Codes of Practice and national guidance.



Case Study: RSPB Loch of Strathbeg

We are currently engaged in a major restoration plan with RSPB Scotland which comprises a number of areas of work including:

River Restoration of the Savoch Burn - restoring natural river features, plus engineering of sediment trapping.

Monitoring of stream flows along with hydrological analysis and flow modelling.

Re-engineering of fen and lowland wet grassland habitats.

Restoration habitat modelling for the Mosstown Fens including water level impact assessment.

Aquatic macrophyte surveys.

Producing a Water Level Management Plan for the Loch and its tributaries.

Producing a Water Quality Management Plan to resolve eutrophication issues including addressing the provisions of the Water Framework Directive.

Water quality modelling including catchment nutrient modelling.

Development of remedial measures to solve elevated levels of Loch nutrients. The work has also included habitat modelling, topographic survey, soil survey, hydrological monitoring and modelling, nutrient assessments, and an EIA of proposed solutions.



1 The Courtyard, Denmark Street, Wokingham, Berkshire, RG40 2AZ
T : 0870 240 3329 F : 0118 977 2147 E : info@ohes.co.uk

www.ohes.co.uk

Contact 0870 240 3329

www.ohes.co.uk





Fisheries Monitoring and Management

Sound Science, Practical Solutions



Fish are an excellent indicator of the biodiversity value of the watercourses they inhabit. Effective fisheries management relies on a good understanding of the nature of fish populations and their habitats.

Our team of experienced fisheries scientists and aquatic ecologists can monitor, manage, and improve fisheries and habitats, delivering a flexible and pragmatic service to our clients.

We have successfully delivered major habitat improvements; designed and created fish passes and bypass channels; conducted scientific monitoring programmes and delivered recreational improvements for Local Authorities, Government Organisations, Utility Companies, Angling Clubs and Fishery Owners.

"I was very impressed with OHES' report on developing Angling Networks for London. It was delivered on time and is excellent value for money"

*Matt Carter, Regional Fisheries Specialist,
Environment Agency (Thames Region)*



www.ohes.co.uk

Fisheries Monitoring and Management



Our services include:

- * Fish Population Survey (Electric Fishing & Netting)
- * Fisheries Management
- * Water Quality Monitoring
- * River Restoration & Lake improvements
- * Angling Access Improvements
- * Topographical & Bathymetric Survey
- * Fish Pass Assessment, Design and Construction
- * Feasibility Studies, Planning & Project Management
- * Aquatic Weed Control
- * River Habitat and Corridor Surveys
- * Socio-economic Studies
- * Impact Assessments

Please contact us if we can be of any further help. All the services we provide follow recommended Codes of Practice and national guidance.



Case Study: River Windrush Fish Pass and Bypass Channel.

OHES was commissioned to design and construct a fish pass and bypass channel at Newbridge Mill on the River Windrush on behalf of the Environment Agency. The weir system at the Mill had been an impassable barrier to fish migration for over 200 years, preventing fish from the River Thames (only 150metres downstream) migrating into the River Windrush.

An existing degraded channel was used to create a fast-flowing stream which would provide a bypass route around the existing weirs. The increased flows through this channel would also expose gravels, and provide spawning and nursery habitat for fish.

At its upper end, a formal fish pass was constructed which would enable monitoring of fish passing through, and facilitate flow gauging as specified by the client.

Where the stream connects with the River Windrush again, a flume was constructed to concentrate flows and provide attraction flow for fish.

“We are delighted with the outcome of this project. Fish can now move freely between two major river systems and several kilometres of new habitats are now available for the first time in over 200 years, which will help to improve fish populations of the River Windrush”

Lizzie Rhymes, Fisheries Projects Officer,
Environment Agency



1 The Courtyard, Denmark Street, Wokingham, Berkshire, RG40 2AZ
T : 0870 240 3329 F : 0118 977 2147 E : info@ohes.co.uk
www.ohes.co.uk

Contact 0870 240 3329

www.ohes.co.uk





Invasive Plant Management

Managing, Clearing, Protecting



Uncontrolled invasive and injurious plants can be harmful to people, livestock and wildlife. Their presence decreases the biodiversity value of land and water environments and can cause delay and additional cost to development projects.

OHES can manage invasive plants such as Japanese Knotweed, Himalayan Balsam and many other species. We have the skills and qualifications (BASIS and NPTC certified) to deal with any unwanted or invasive plant species in both aquatic and terrestrial situations, working to current legislative and government guidance.

With our extensive botanical knowledge and expertise we can ensure your plant control needs are met while ensuring the protection of the environment.

“I was very impressed with the efficiency and professionalism that was shown by OHES in controlling our aquatic weed. This has greatly improved our fishery and the biodiversity on the St Patrick’s Stream”

David Johnson
Twyford and District Fishing Club

Invasive Plant Management

We can provide a range of services for the control of invasive and injurious plants. We can produce individual and detailed management plans for the control of your unwanted plants. We provide practical and effective solutions to ensure our services fit your needs, and that we obtain the outcomes you want. Our team also offers contaminated land management services for larger infestations.

Our services include:

- ✳ Control of Invasive and Injurious Plants including:
 - ✳ Japanese Knotweed
 - ✳ Himalayan Balsam
 - ✳ Giant Hogweed
 - ✳ Fringed Water Lily
 - ✳ Floating Pennywort
 - ✳ Mare's Tail
 - ✳ Parrot's Feather
 - ✳ Water Fern
 - ✳ Duckweed..... and many other species
- ✳ Large and Small Scale Plant Control Solutions
- ✳ Catchment Level Evaluation for Invasive Species
- ✳ Production of Management Plans
- ✳ Site Specific Species GIS Mapping
- ✳ GIS Density Mapping
- ✳ Contaminated Land Solutions
- ✳ Aquatic Habitat Management
- ✳ Land Development Clearances

Please contact us if we can be of any further help. All the services we provide follow recommended Codes of Practice and national guidance.



Case Study: Fringed Water-lily (*Nymphaoides peltata*) Control on the River Colne, Hertfordshire.

We were engaged to control fringed water-lily on the River Colne in Hertfordshire. The lily was impacting the river habitat causing increased siltation, dominating other native submerged plants by shading and reducing recreational access. We assessed this infestation and produced an improvement plan to help address the problem.

We applied an initial chemical control as a primary and immediate action to restore the river channel and improve angling access. This was followed by further physical control adjustments by the regulatory authority which included the removal of an impounding structure.

The combination of treatment and reducing the impounding effects permitted the river to flow more freely, cleared the choking silts and weed, vastly improved the site's visual appearance and opened up a new opportunity for recreation and wildlife.



1 The Courtyard, Denmark Street, Wokingham, Berkshire, RG40 2AZ
T : 0870 240 3329 F : 0118 977 2147 E : info@ohes.co.uk
www.ohes.co.uk

Contact 0870 240 3329

www.ohes.co.uk

Part of the OAMPS group of companies



OHES Environmental
1 The Courtyard, Denmark Street, Wokingham, Berkshire, RG40 2AZ
T : 0870 240 3329 F : 0118 977 2147 E : info@ohes.co.uk
www.ohes.co.uk

