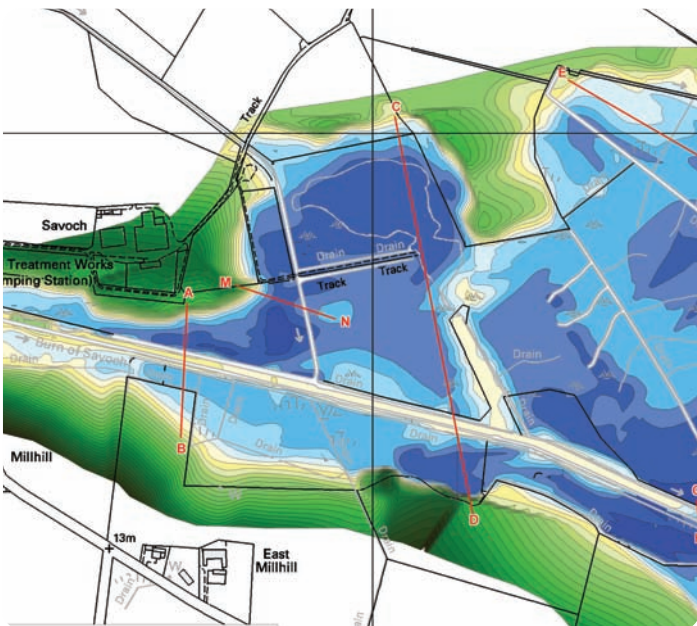




Habitat Restoration and Design

Better Biodiversity by Design



Habitat restoration is a fundamental step in achieving improved biodiversity, which requires knowledge and understanding of the interactions of wildlife and their environments.

We have an extensive track record in delivering high quality habitat restoration projects in a range of aquatic and terrestrial environments for the benefit of wildlife and people.

We are framework advisors to Natural England on issues affecting nationally and internationally important wetlands, and we are working on a broad portfolio of projects for clients such as RSPB, Environment Agency, Local Authorities and the Broads Authority.

OHES have certainly given us a pond that will not only be one of the best urban coarse fisheries in London, but also a fantastic place for people and wildlife to use and enjoy.

We certainly look forward to working with OHES again on many other exciting projects”

Dr Iain Boulton, Parks Project Officer,
London Borough of Lambeth

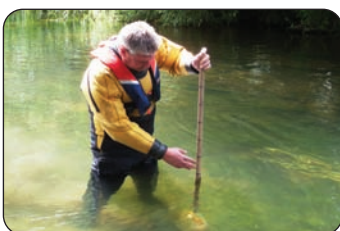
Habitat Restoration and Design



We can provide ecological, topographical, hydrological and soil surveys to inform feasibility, conceptual and detailed designs based on our extensive knowledge of wetland and terrestrial habitats, to provide practical and effective solutions to habitat creation, restoration and management projects. Our team can also offer project management services.

- * Topographical Survey and Interpretation
- * Soils Survey
- * Ecological Survey including:
 - Habitat Assessment (Phase I)
 - River Habitat Survey
 - Vegetation Survey (NVC)
 - Protected Species Survey
 - Aquatic Macrophyte Survey
 - Site Condition Assessment
- * Hydrological Studies
- * Water Quality and Nutrient Management
- * River Management and Restoration
- * Lake and Pond Restoration
- * Water Level Management
- * GIS and Habitat Modelling
- * CAD design
- * Access and Interpretation

Please contact us if we can be of any further help. All the services we provide follow recommended Codes of Practice and national guidance.



Case Study: RSPB Loch of Strathbeg

We are currently engaged in a major restoration plan with RSPB Scotland which comprises a number of areas of work including:

- * River Restoration of the Savoch Burn - restoring natural river features, plus engineering of sediment trapping.
- * Monitoring of stream flows along with hydrological analysis and flow modelling.
- * Re-engineering of fen and lowland wet grassland habitats.
- * Restoration habitat modelling for the Mosstown Fens including water level impact assessment.
- * Aquatic macrophyte surveys.
- * Producing a Water Level Management Plan for the Loch and its tributaries.
- * Producing a Water Quality Management Plan to resolve eutrophication issues including addressing the provisions of the Water Framework Directive.
- * Water quality modelling including catchment nutrient modelling.
- * Development of remedial measures to solve elevated levels of Loch nutrients. The work has also included habitat modelling, topographic survey, soil survey, hydrological monitoring and modelling, nutrient assessments, and an EIA of proposed solutions.



1 The Courtyard, Denmark Street, Wokingham, Berkshire, RG40 2AZ
T : 0870 240 3329 F : 0118 977 2147 E : info@ohes.co.uk

www.ohes.co.uk

Contact 0870 240 3329

www.ohes.co.uk

